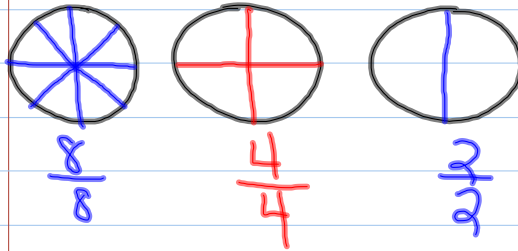


Lesson 59 Fractions = to 1

Changing Improper Fractions to Mixed #'s



Fractions equal to 1 have to have matching numerators and denominators.

LESSON 51 REVIEW

- 1.) Change the fraction to a division problem * TOP BOX
- 2.) use all 3 #'s in your answer to form the mixed number (make a clockwise circle)

Ex. 1) $\frac{13}{5}$

$2\frac{3}{5}$

$5 \overline{) 13} \begin{array}{r} 2 \\ \underline{10} \\ 3 \end{array}$ make a mixed #

Ex. 2) $\frac{8}{3}$

$2\frac{2}{3}$

$3 \overline{) 8} \begin{array}{r} 2 \\ \underline{6} \\ 2 \end{array}$

Ex. 3) $\frac{47}{6}$